



# BEAM XL

designer LAI QIUHUI  
HE SHAO MIN  
PENG RUN

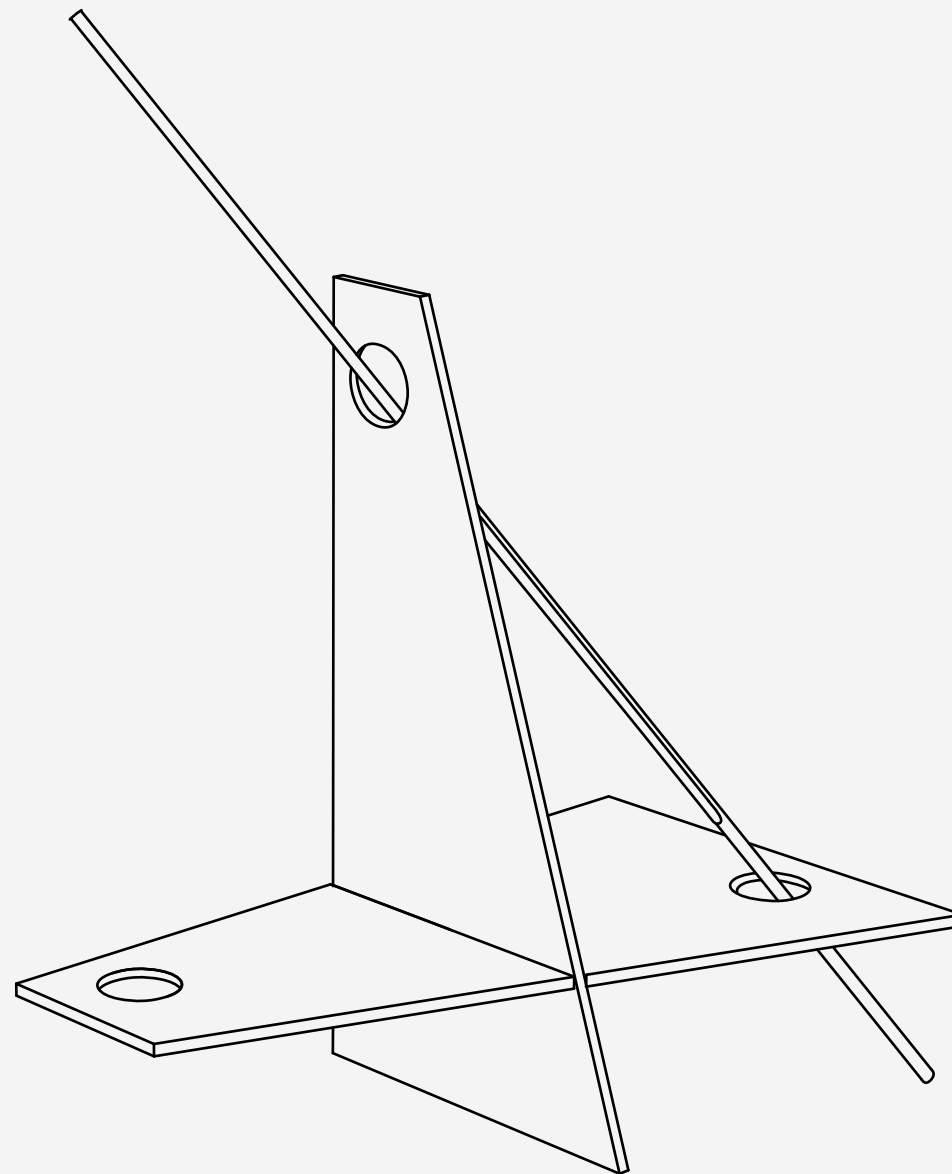
product COATRACK

material	plybamboo	750x1000x15mm	1 piece
	bamboo	Φ25x1700mm	1 piece
	bamboo nails	Φ1mm*18mm	2 pieces
	cork	Φ15mm*15mm	1 piece
	LED strip	620*14mm	1 piece
	switch		1 piece
	transformer		1 piece

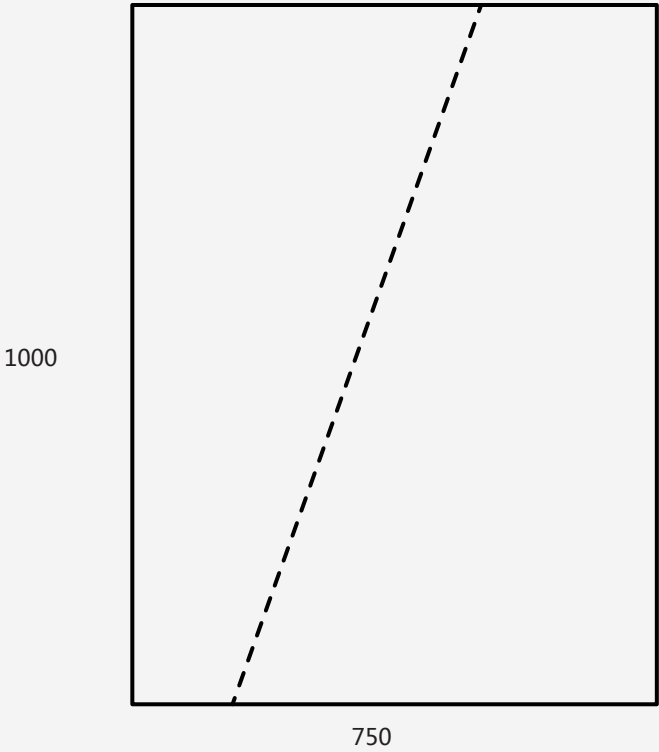
tool chainsaw  
electric drill  
pencil  
ruler  
sandpaper

update 2017/04/21

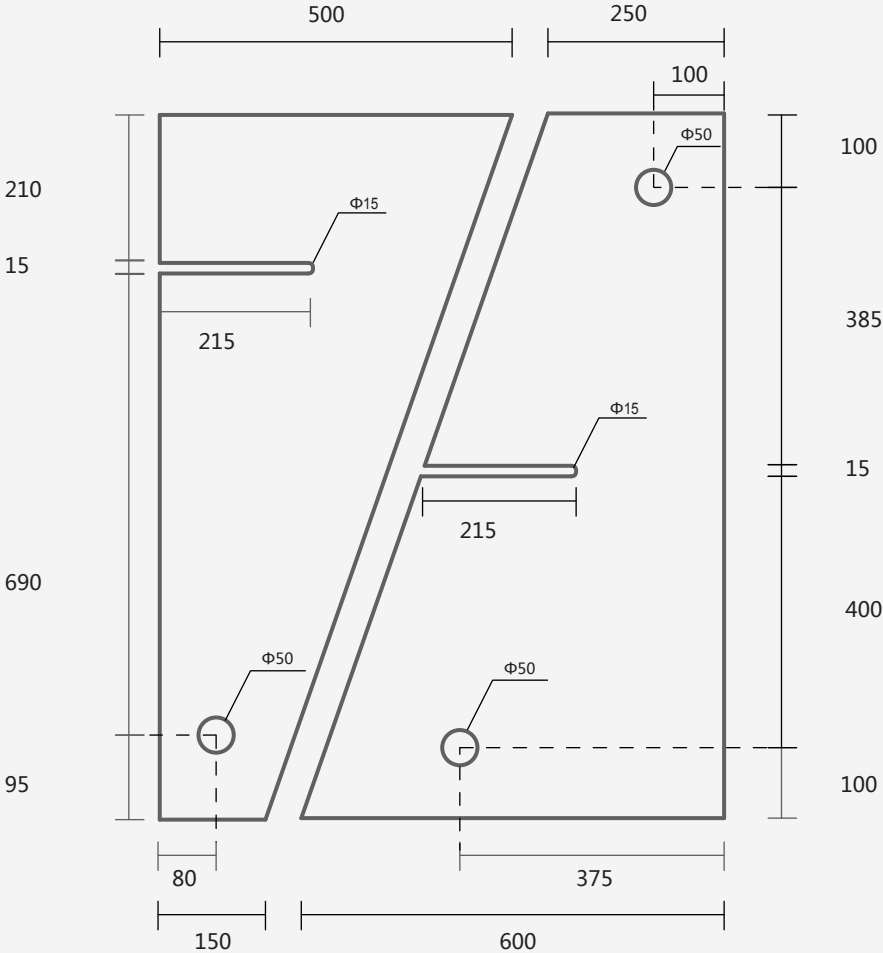
Guangdong University of Technology  
Opendedesign Workshop



# MEASUREMENTS(mm)



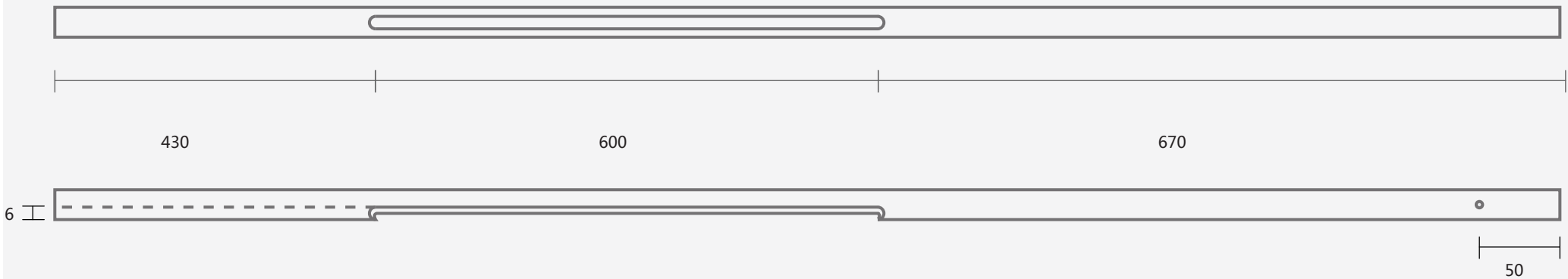
Cutting one plybamboo to 2 pieces



Making holes and gaps on these 2 plybamboo



# MEASUREMENTS(mm)



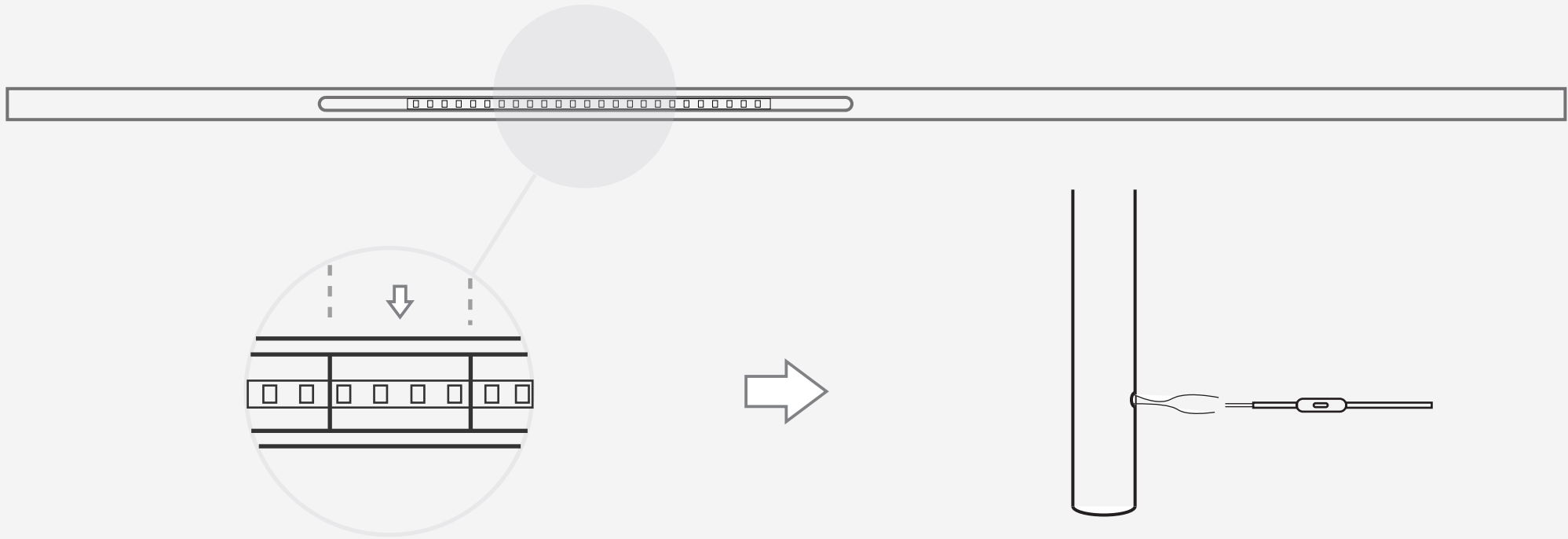
Opening a slot on the bamboo, and hollow the dust of the bamboo out



Inserting the LED strip into the bamboo

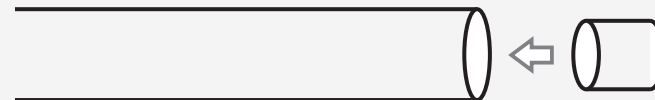


# PROCESSES



Making 1mm holes at the slot of the 1/3 position and 2/3 position, and insert the bamboo nails in them, to fasten the LED strip

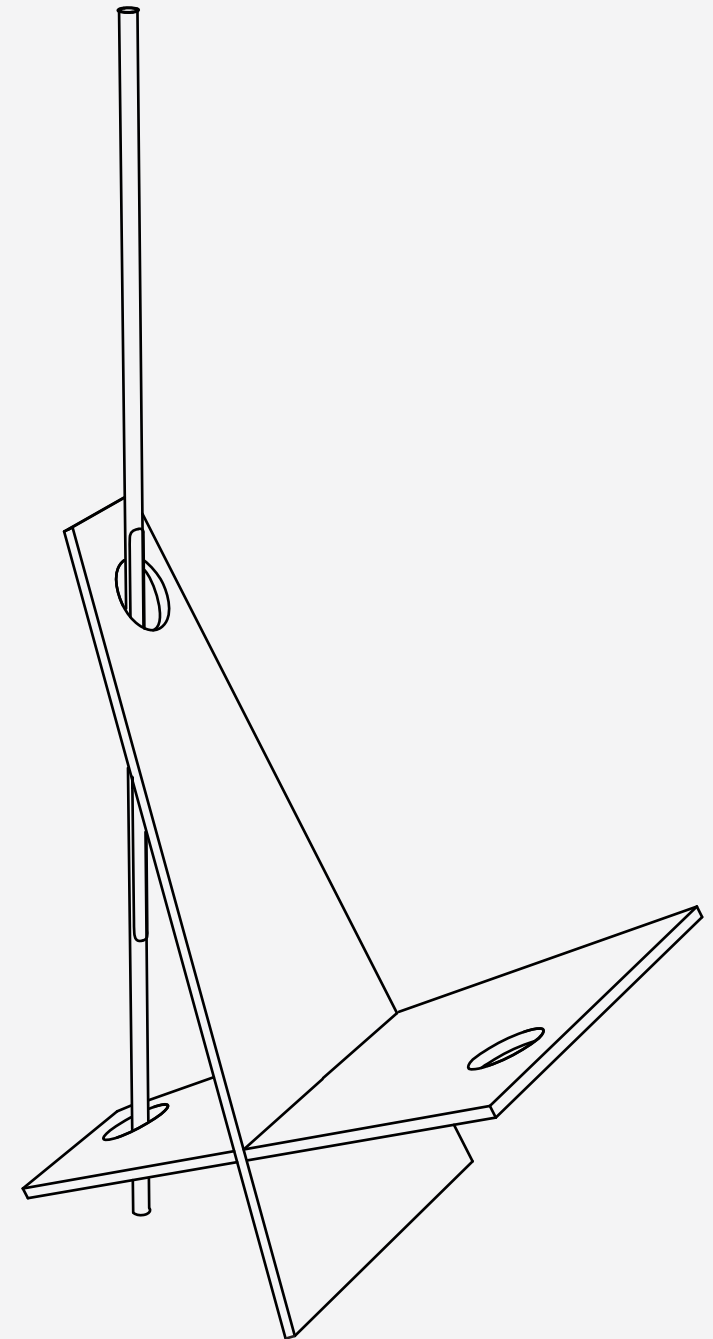
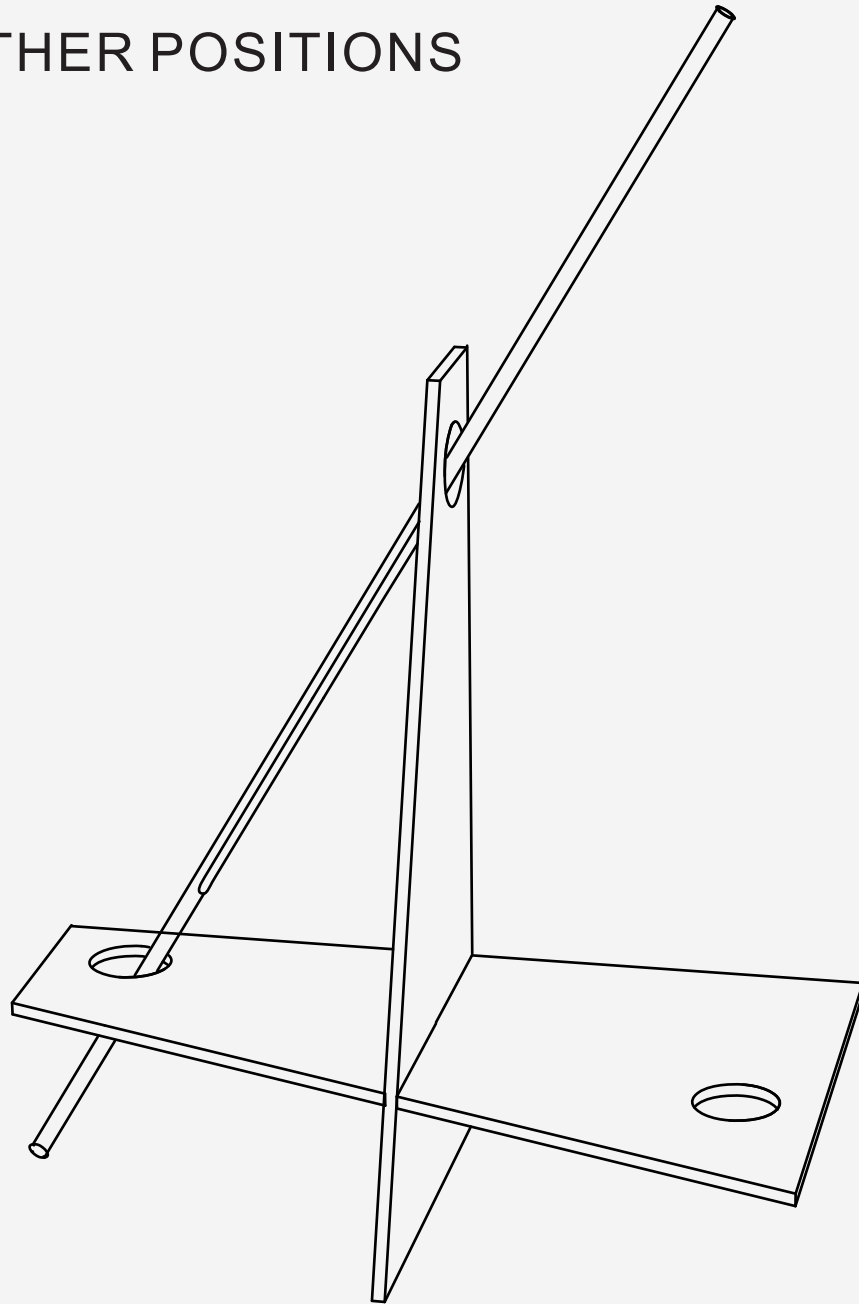
Making a hole at 50mm point from the bottom, which is in order to let the cable out and connected with the switch



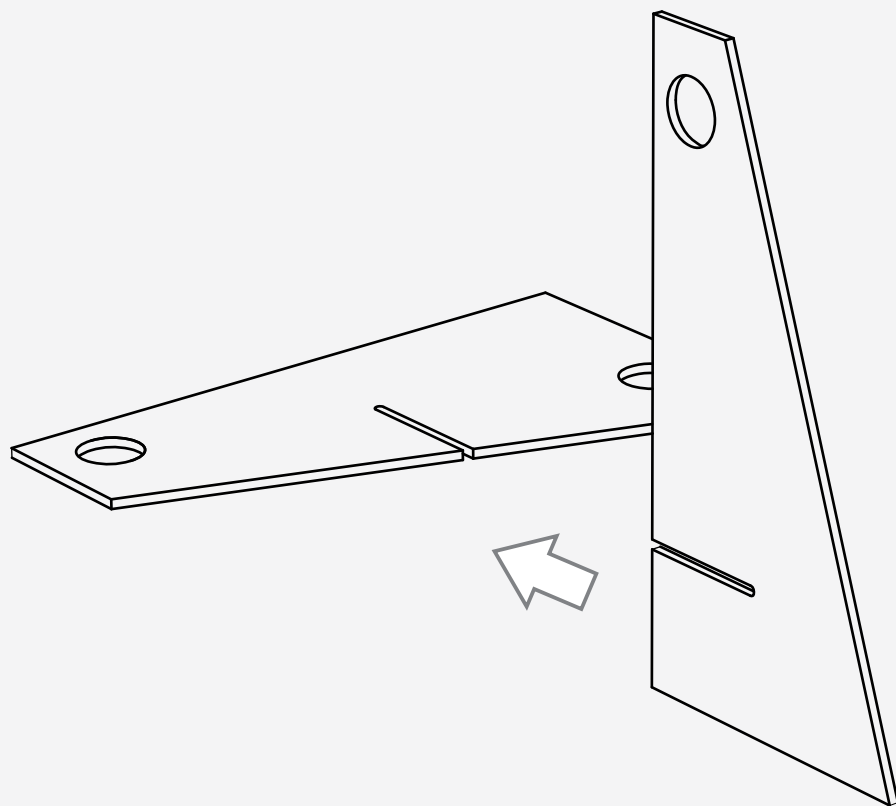
Finally, block the hole with the cork



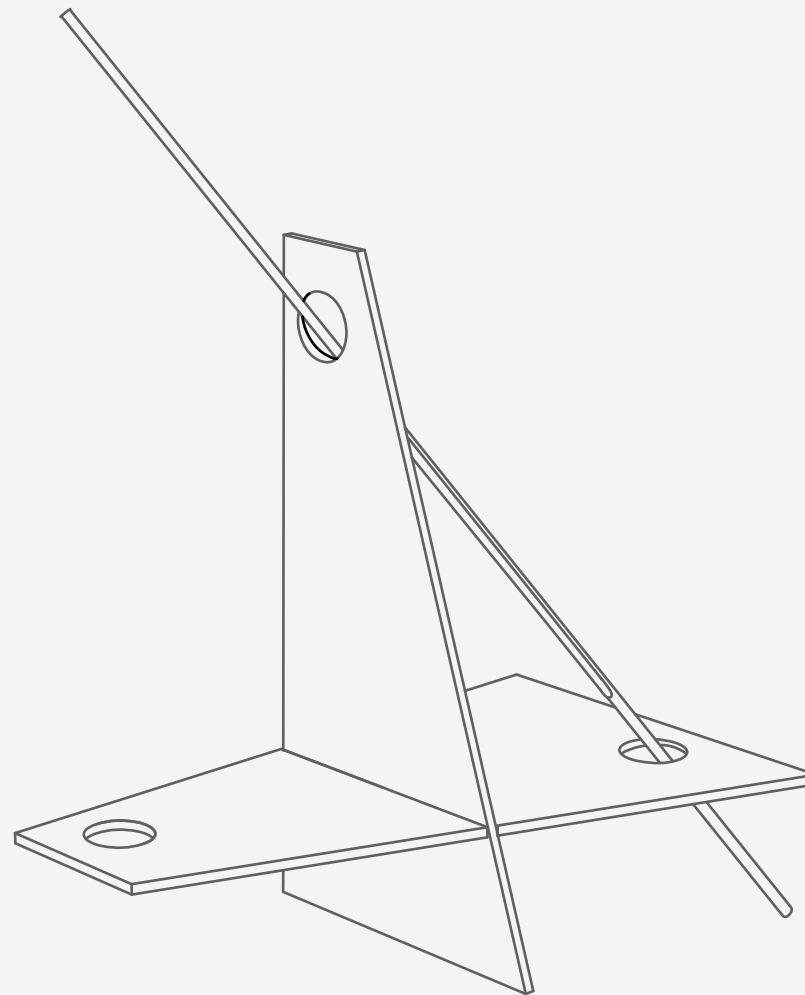
## OTHER POSITIONS



# PROCESSES



Put them together



At last, insert the bamboo



## OTHER POSITIONS

