



# TRIANGLE BEAST

Designer HU SHENGLIANG

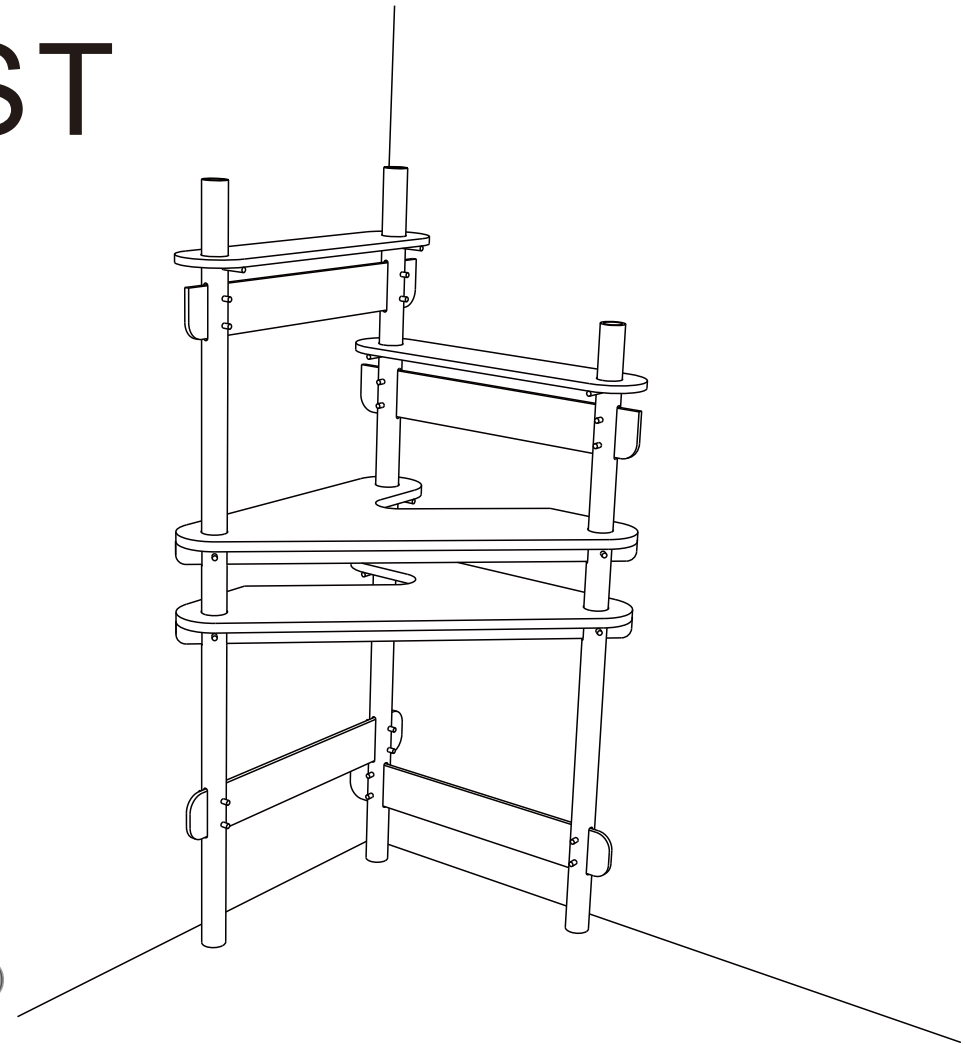
Product OFFICE TABLE

Materials	Ply-bamboo	(700*700*20mm	2 pieces/
		700*150*15mm	2 pieces/
		930*45*10mm	2 pieces/
		700*10*10mm	4 pieces)
	Bamboo	(Φ50*1570mm	2 pieces/
		Φ50*1310mm	1 pieces)
	Bamboo stick	(Φ10*80mm	20pieces/
		Φ10*150mm	6 pieces)

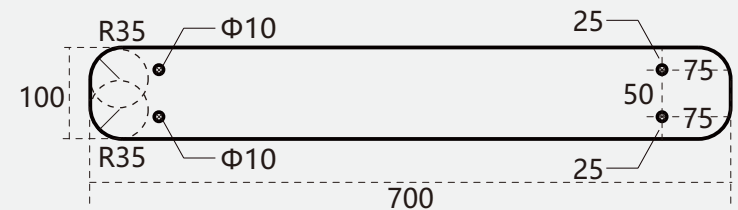
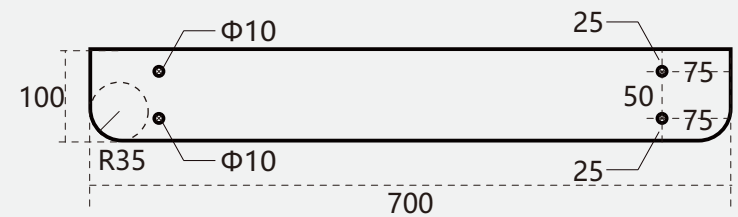
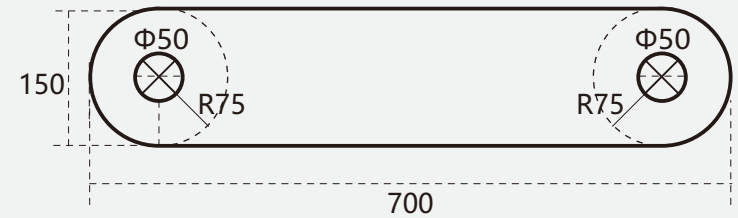
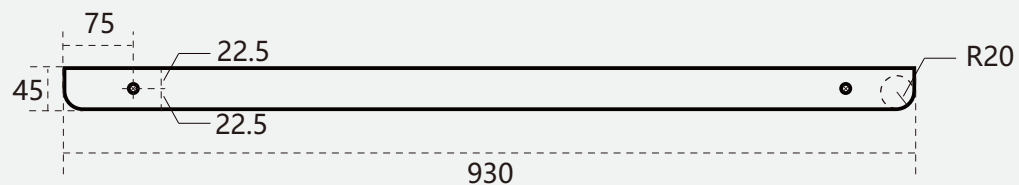
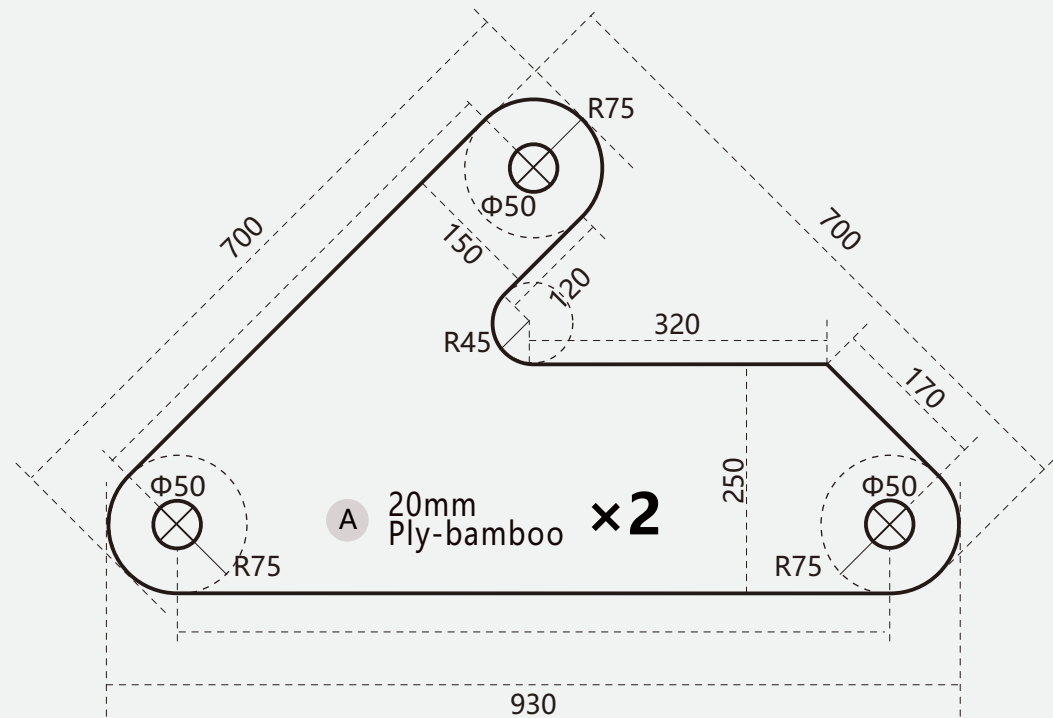
Tools Saw,Pencil,Ruler,Sharpener,Electrodrill (Φ10/50mm)

update 2017/06/04

Guangdong University of Technology  
Opendedesign Workshop



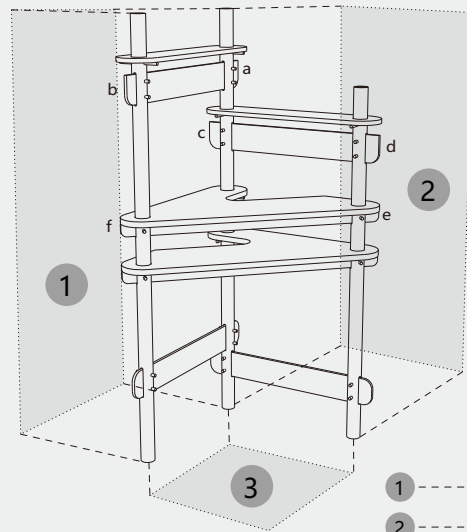
# MEASUREMENTS:(mm)



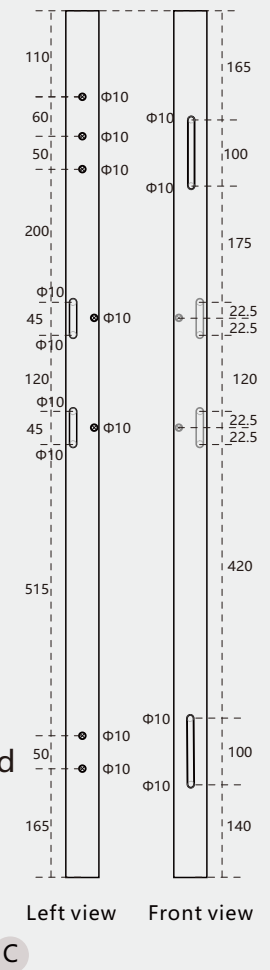
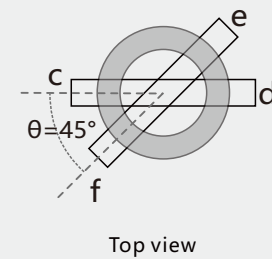
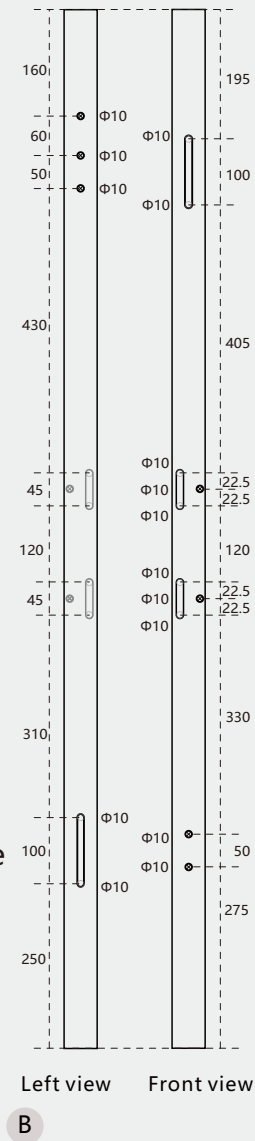
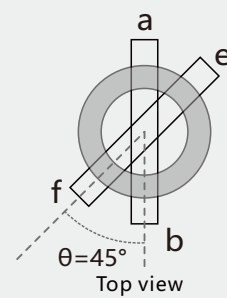
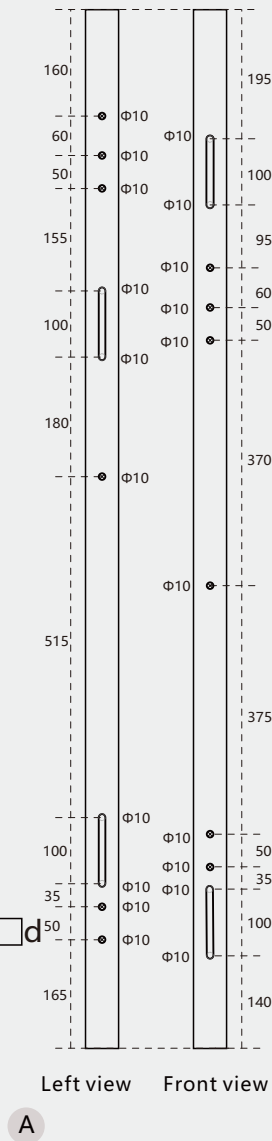
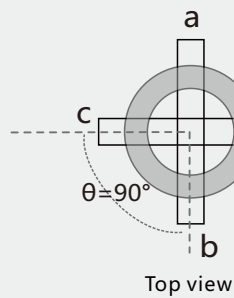
cut the plybamboo, and drill Φ50/Φ10mm holes at the places ⊗ .



# MEASUREMENTS:(mm)



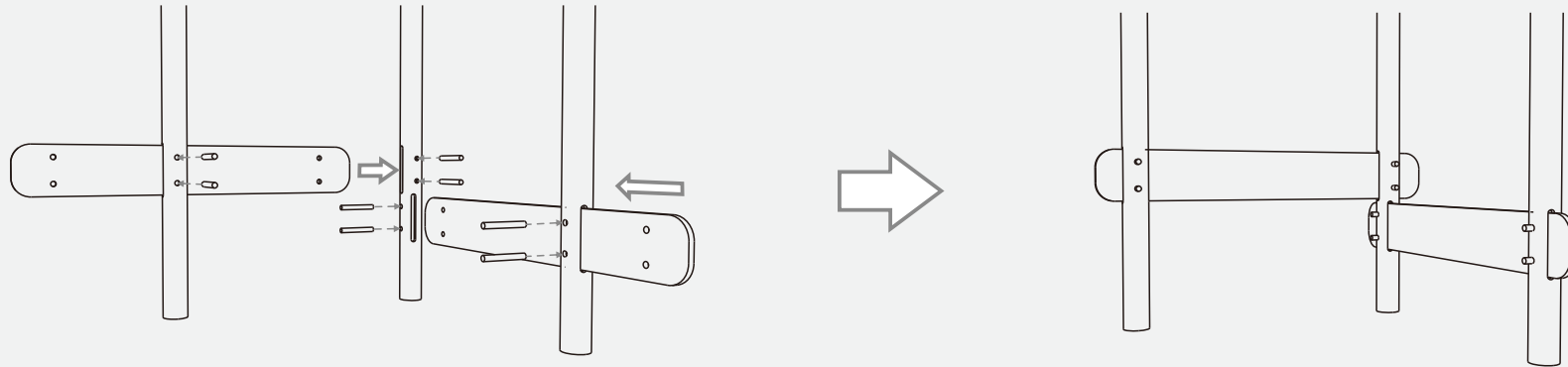
- 1 --- Front view
- 2 --- Left view
- 3 --- Top view



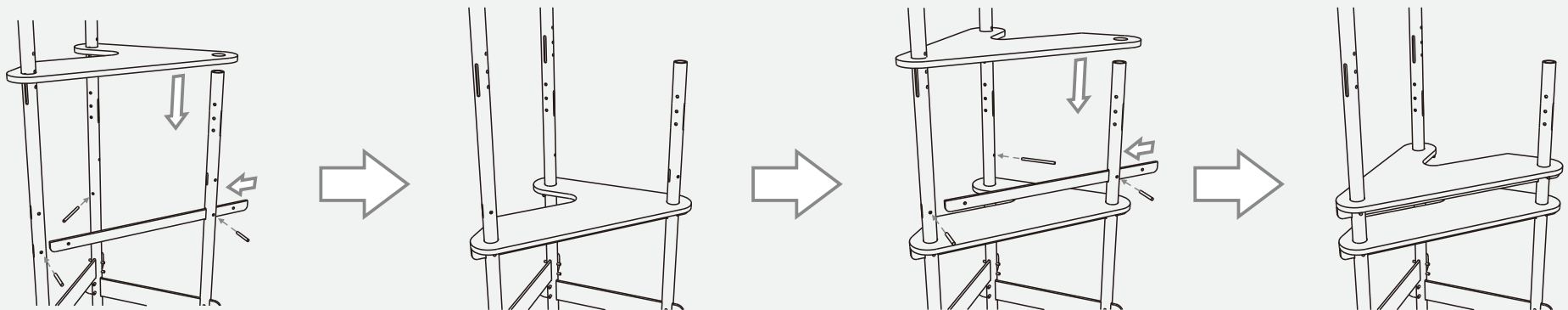
cut the bamboo, drill the Φ10mm holes at the place ⊗, and insert the bamboo sticks.



# ASSEMBLY:



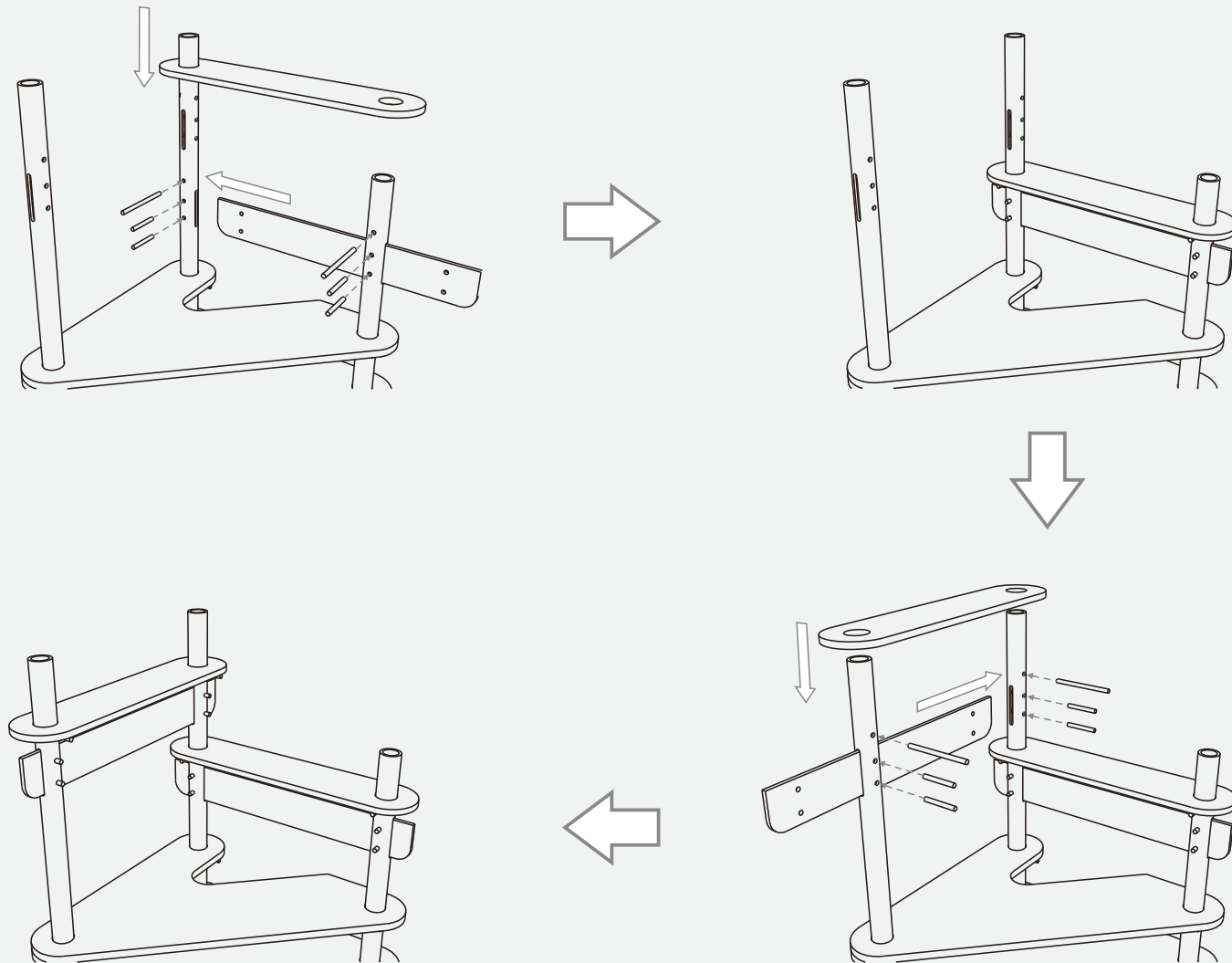
A Assemble the bottom part



B Assemble the middle part



# ASSEMBLY :

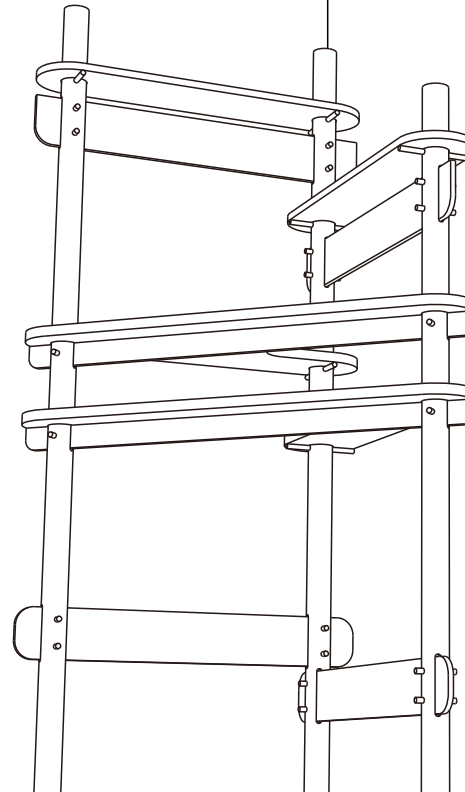


C Assemble the upper part



TRIANGLE BEAST

OFFICE TABLE



\*IF YOU MEET SOME PROBLEMS WHEN BUILDING THIS SECOND KISS, PLEASE CONTACT ME >

**2431595276@qq.com**

