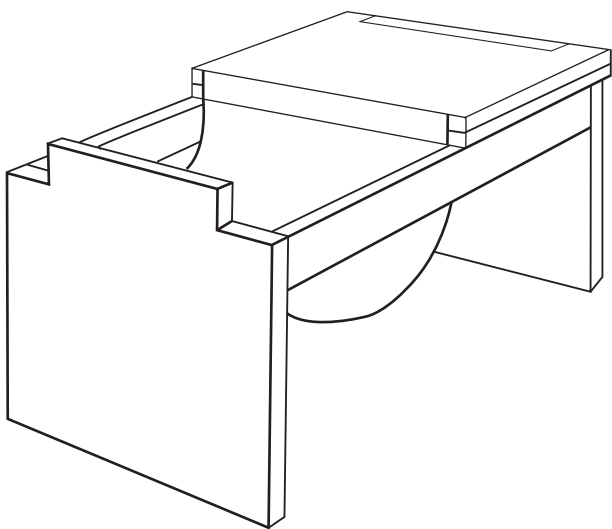




TABLE **HANDSOME**

DESIGNER Peng





OpenDesign

www.downloadopendesign.com

MATERIALS



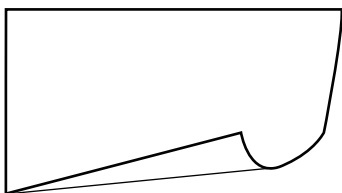
Plybamboo

620*2000*18mm

1pieces

620*2000*20mm

1pieces

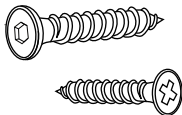


Leather

750*550mm



Adhesive



screw

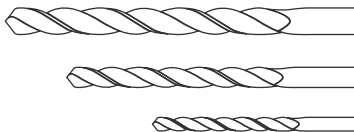
12*30mm

3.5*20mm

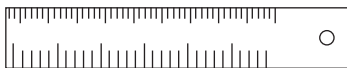
TOOLS

Electrodrill

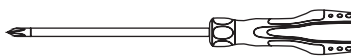
Φ3/4/6 / mm



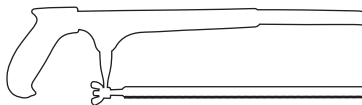
ruler



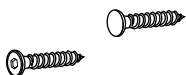
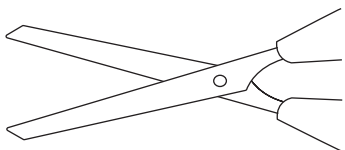
screw the pen



Saw



scissors

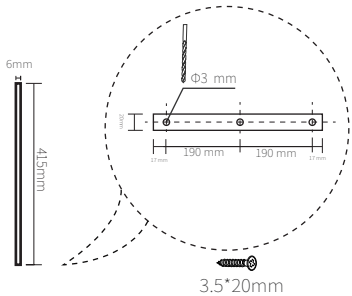
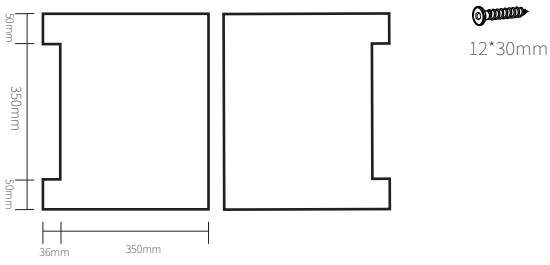
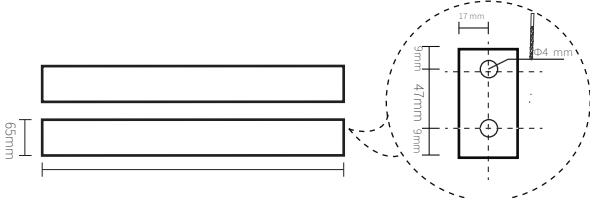
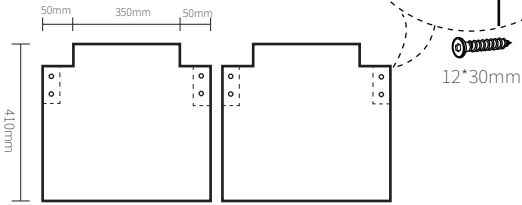


sandpaper

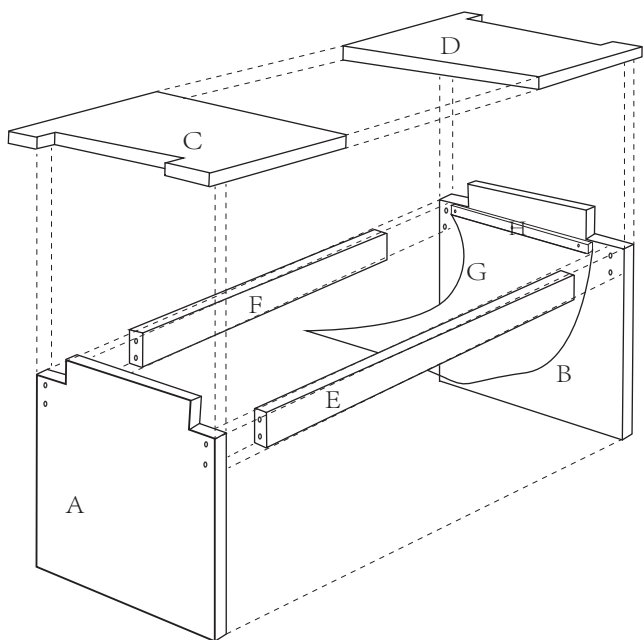
#180 / 320 / 500



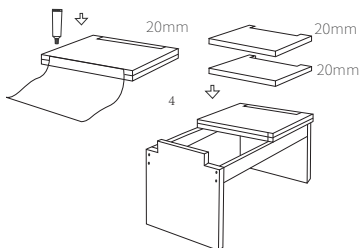
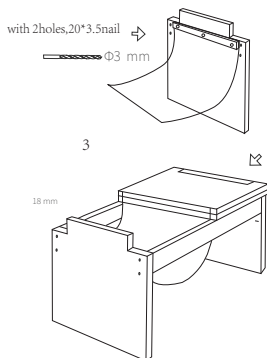
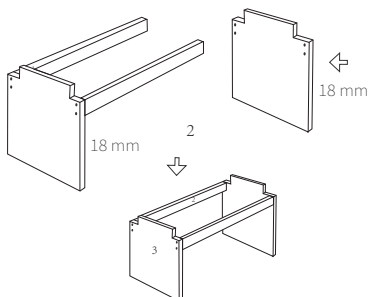
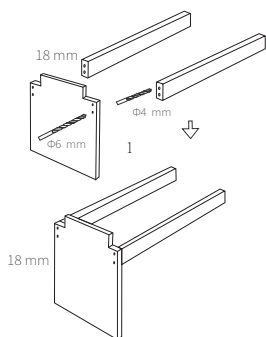
PIECES



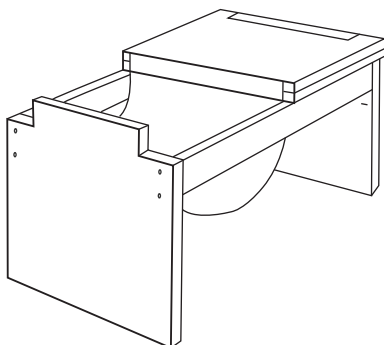
ASSEMBLY



STEP



two boards aligned in parallel and the apply glue, leather sticker used a hammer to make them connect more firmly



CONGRATULATION!

Now you got your own lamp

If you meet some problems when building this lamp
please contact us
570399545@qq.com



OpenDesign
www.downloadopendesign.com