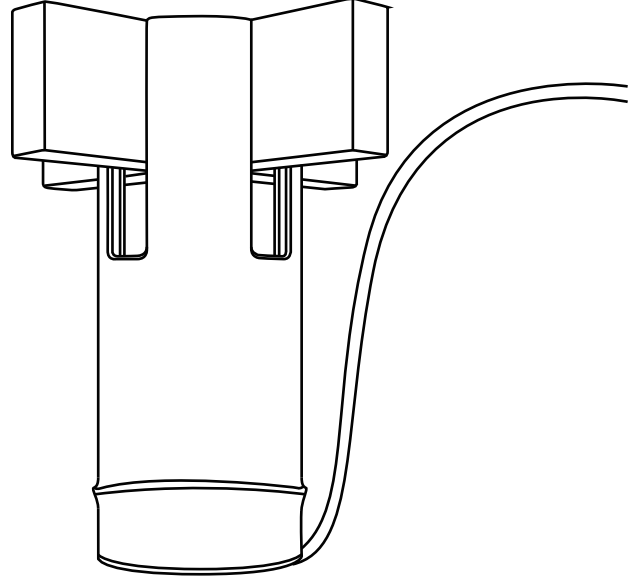
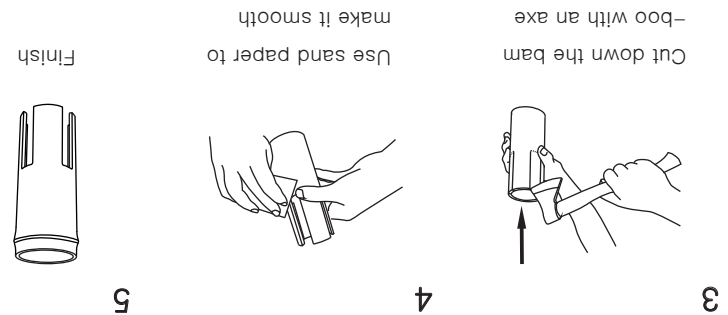
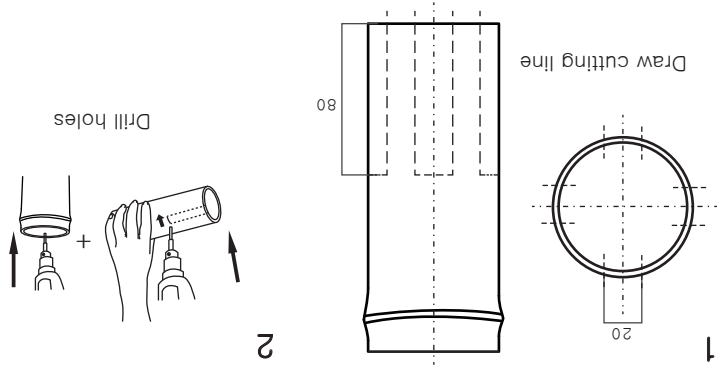
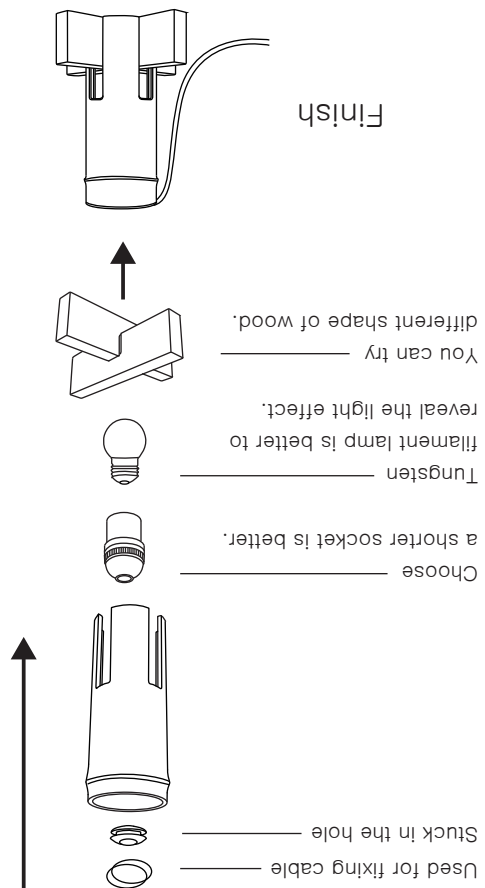


Cutting process 2:

scale=1:4



Composition structure:



Kage Table lamp

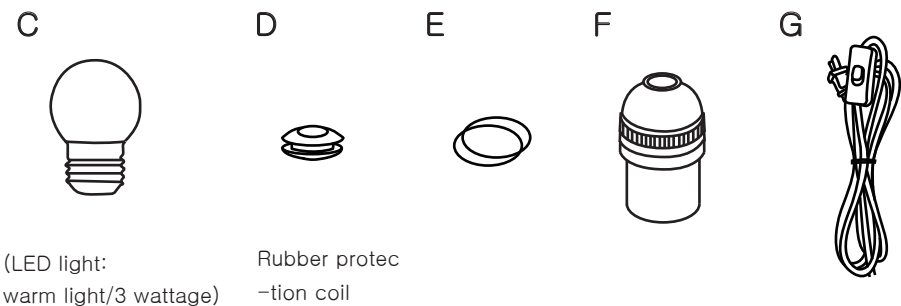
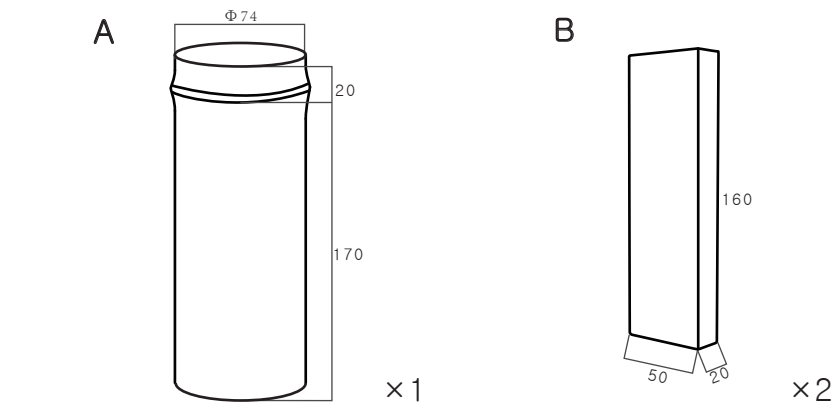
designer WANJING CHEN /WINNIE

update 2015/05/20

HOME-MAKE DIY LAMP

Component Pieces:

scale=1:4



Material:

- Bamboo
- Solid wood
- Rubber protection coil
- LED light
- Rubber band
- Lamp holder
- Cable

Tools:

- Triangular ruler
- Pencil
- Hacksaw
- Carving knife
- Hammer
- Electric drill
- Sand paper
- Axe

Size:

L160xW160xH190

Cost:

Almost 4 dollar

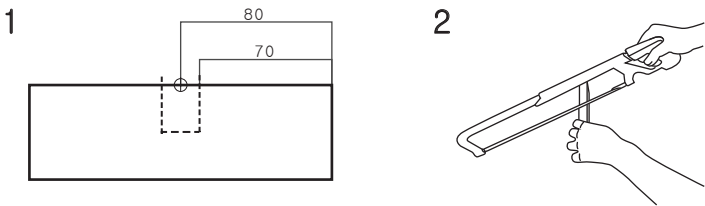
Fab time:

Almost 2 hours

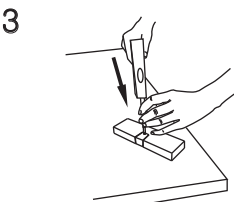
Cutting process 1:

scale=1:4

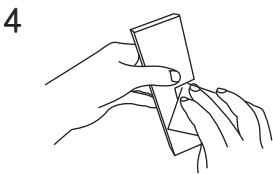
Type one



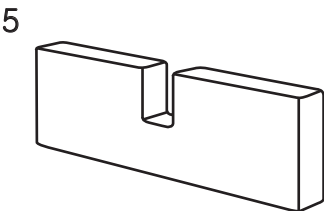
Saw two vertical lines



Use hammer and burin to knock it out

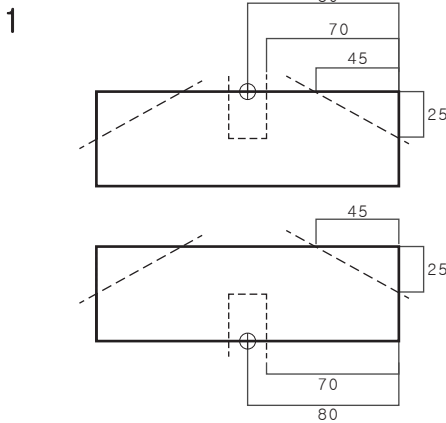


Use sand paper to make it smooth



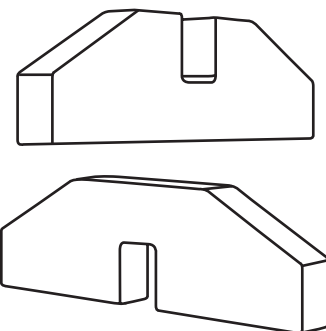
..... Dotted lines indicate symmetric.
----- Dotted lines indicate where to cut wood.

Type two



2/3/4 same as type one

5



Finish