

OpenDesign Skypoint

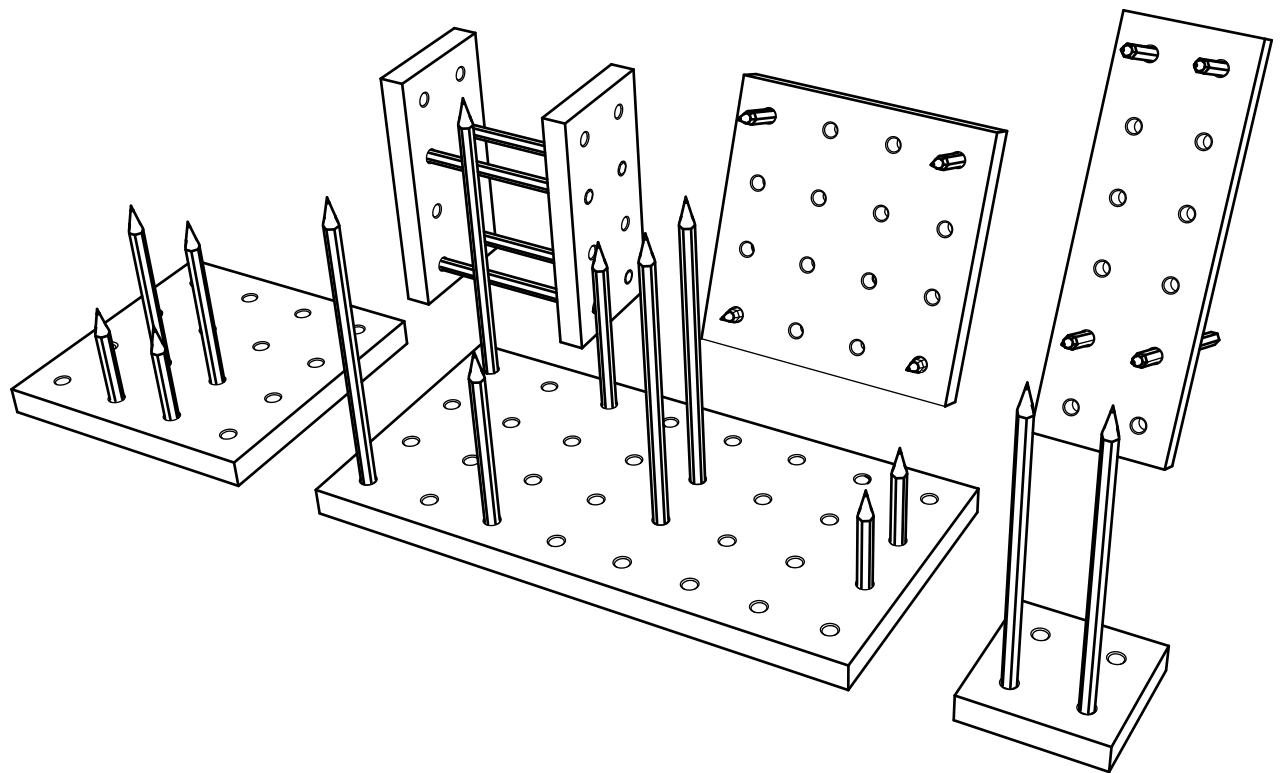
*This product is based on Skyline
by Peng Run, Ke Zilan, Tian Gangwei

designers Cai Zhutong
Wang Xiaowan
Enrique Aparisi

materials Plybamboo, pencil

tools Saw, electrodrill, sandpaper

units mm

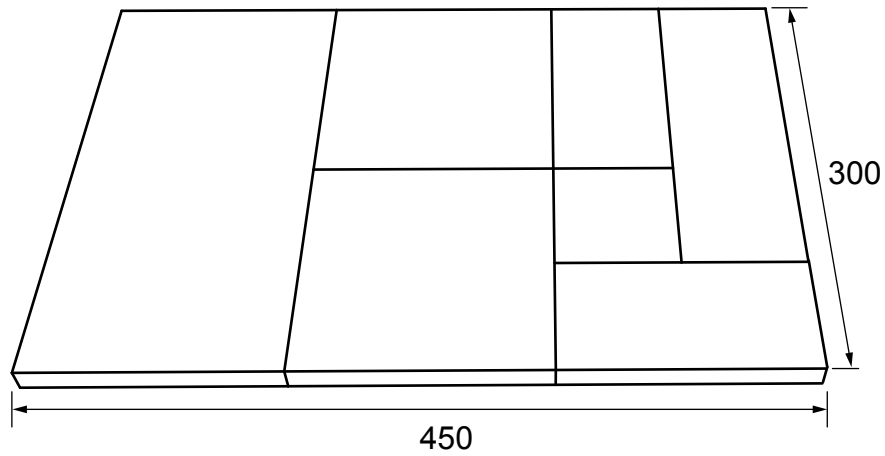


update 2017/11/29

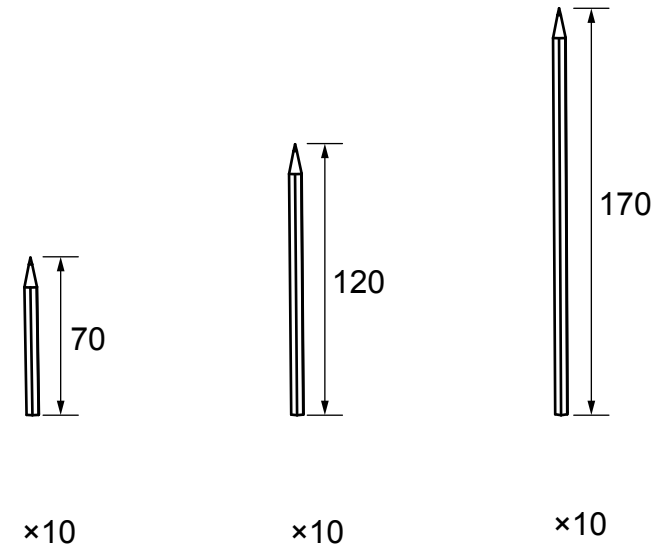
Guangdong University of Technology
Opendedesign+DIY Workshop

MATERIALS

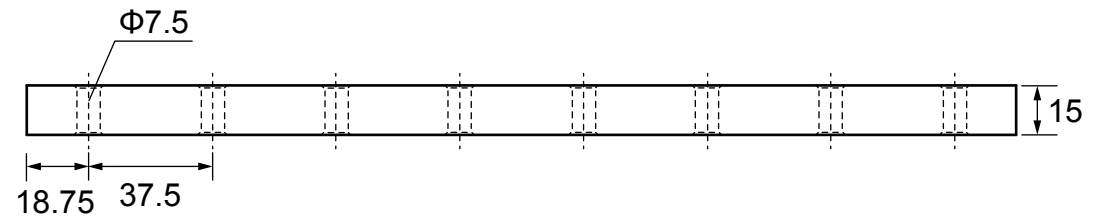
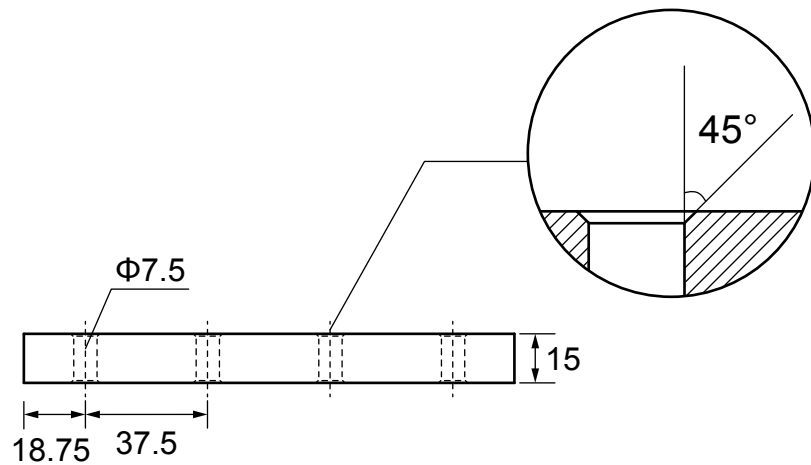
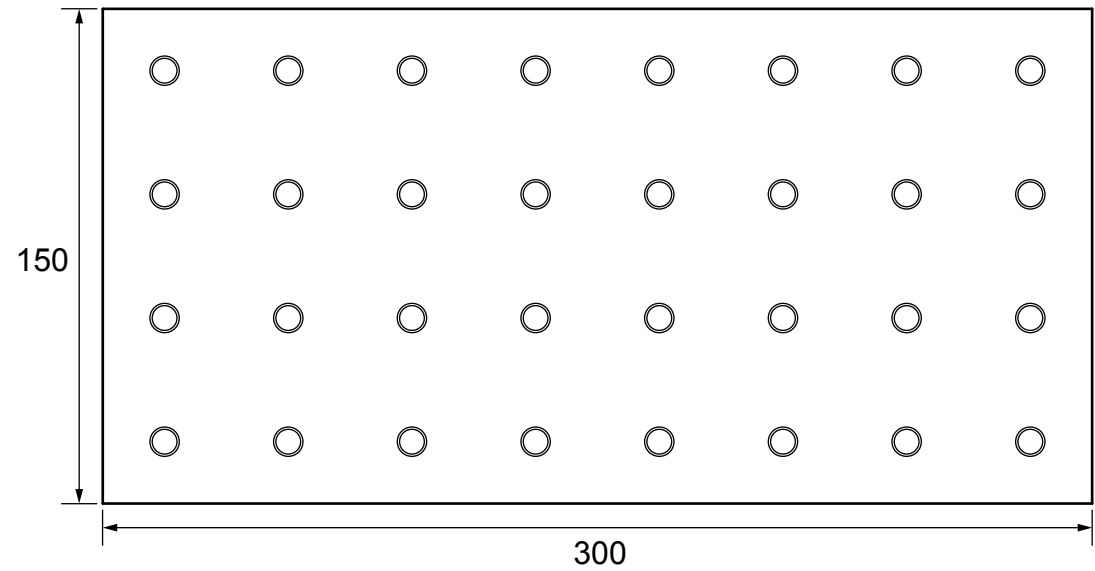
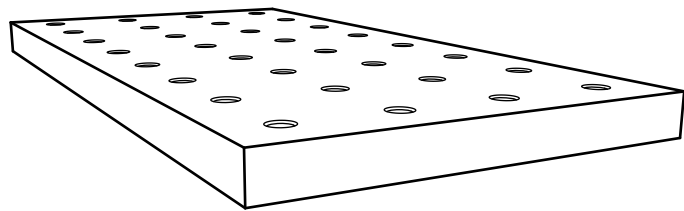
15mm Plybamboo board



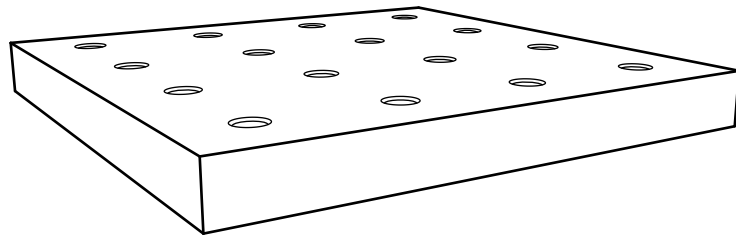
Pencil



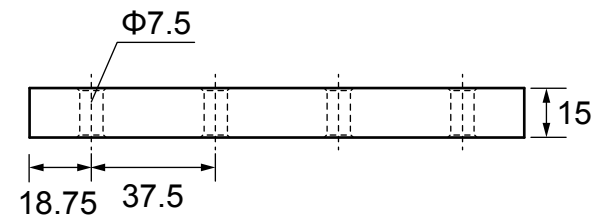
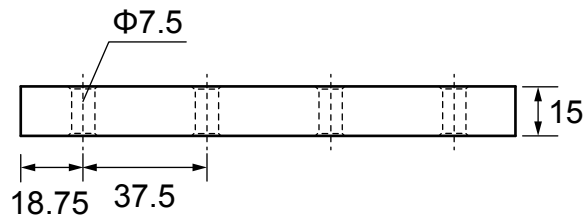
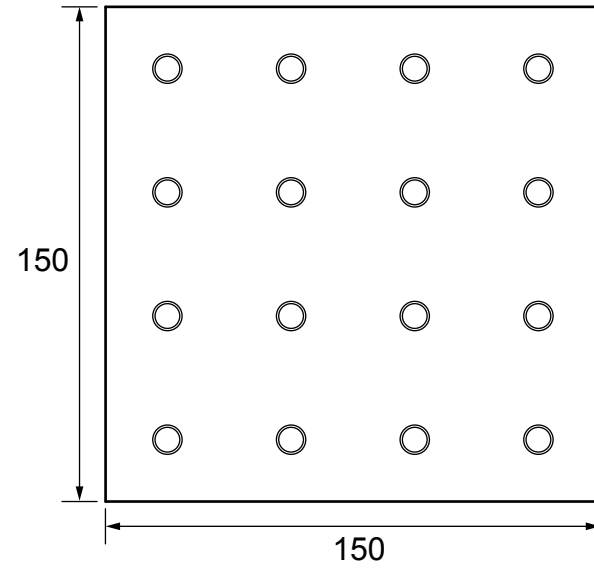
PARTS



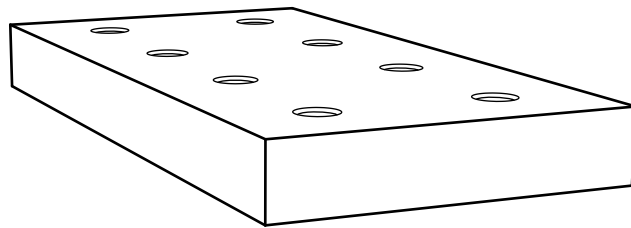
PARTS



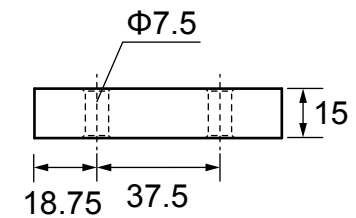
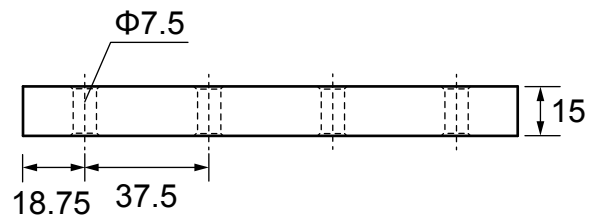
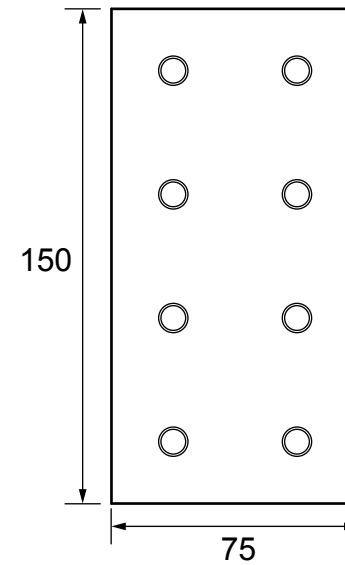
×2



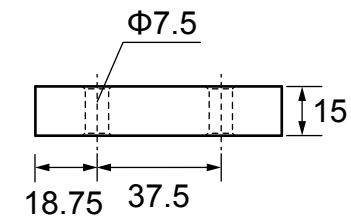
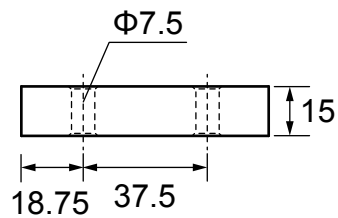
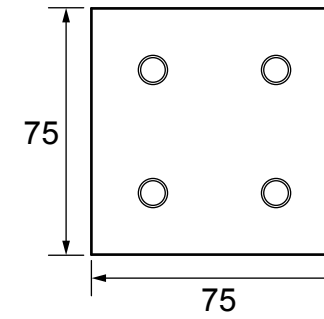
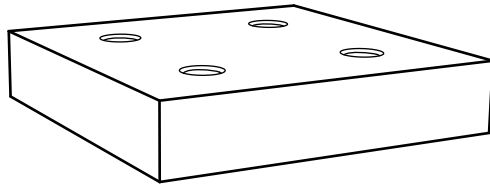
PARTS



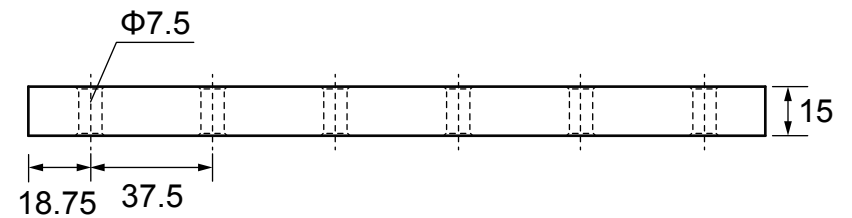
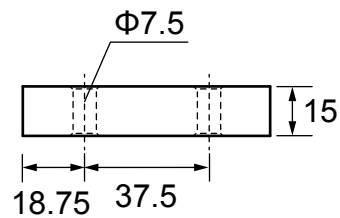
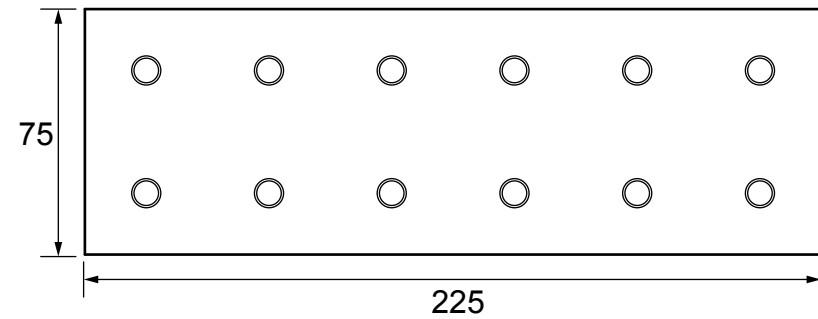
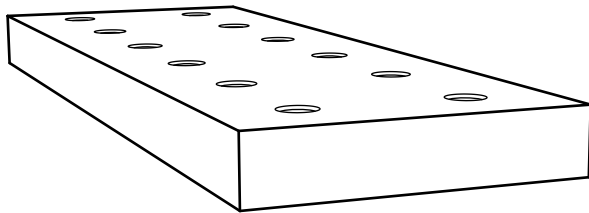
×2



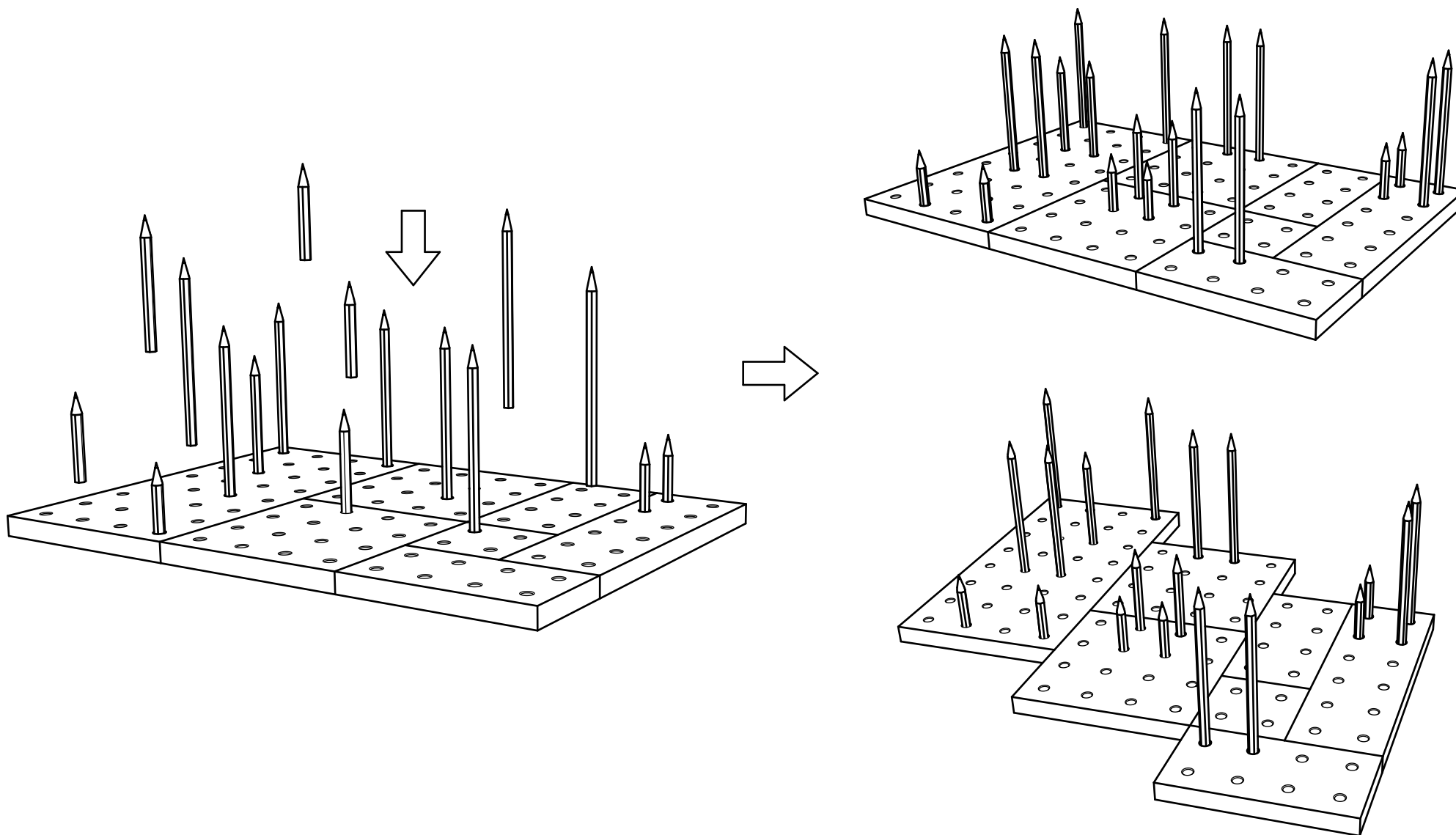
PARTS



PARTS



ASSEMBLY



ASSEMBLY

